

# Hamster Sky

assembly instructions

**SAVIC**<sup>®</sup>  
pets' favourite



Follow us on  

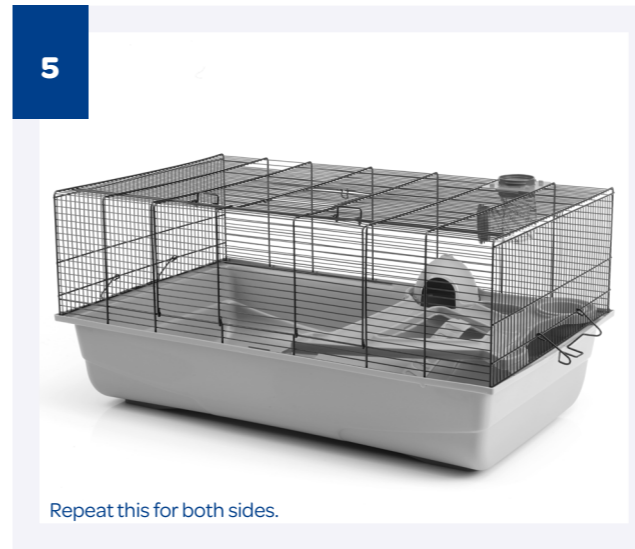
[#petslovesavic](#)



## Check list

Before you start assembling your cage, please check if you have all the components.  
If any part is missing or damaged, do not use your cage.

- |                           |                    |   |                             |
|---------------------------|--------------------|---|-----------------------------|
| <b>A</b> 1 cage           | <b>E</b> 1 sputnik | <b>I</b> 1 stainless steel feeding bowl | <b>M</b> 2 tunnel parts     |
| <b>B</b> 1 plastic tray   | <b>F</b> 2 handles | <b>J</b> 1 drinking bottle + holder     | <b>N</b> 2 squares          |
| <b>C</b> 1 cage platform  | <b>G</b> 1 ladder  | <b>K</b> 10 elbow parts                 | <b>O</b> 2 protection rings |
| <b>D</b> 1 exercise wheel | <b>H</b> 1 iglo    | <b>L</b> 4 xl tunnel parts              | <b>P</b> 12 rings           |



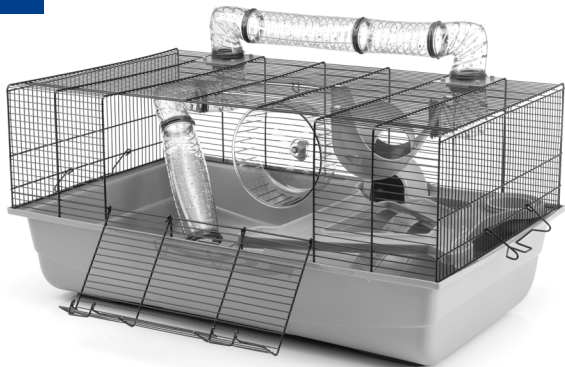
Repeat this for both sides.



8



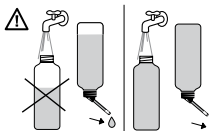
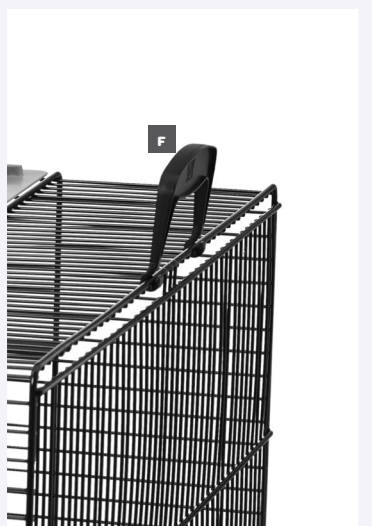
9



Place the pin of the wheel horizontally between the bars and turn it 90° into vertical position.

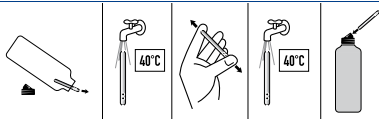


10



**ATTENTION**

To avoid leakage,  
always fill bottle 100%.



Rinse spout with hot water  
before first use.

www.savic.be  
 Ringlaan 10 • B-8501 Heule • Belgium  
 Tel. +32 56 35 33 45 • Fax +32 56 35 77 30  
 info@savic.be  
 Doc.nr.: 931280